An aerial photograph of the Ole Sereni hotel, a large multi-story building with a prominent red facade and the name 'OLE SERENI' in white letters. The hotel is situated on a hillside with a dry, grassy landscape in the background. In the foreground, there is a paved road with a guardrail, a line of trees, and several parked cars. A semi-transparent text box is overlaid on the upper part of the image.

OLE-SERENI - 'THE CITY HOTEL BY THE GAME PARK'
COMBINES THE BEST FEATURES OF A CITY HOTEL AND A
TRADITIONAL KENYAN LODGE TO PRESENT GUESTS WITH A
BLEND OF BREATHTAKING NATURE AND TRANQUILITY



THE ESSENCE AND EXPERIENCE LIES IN
THE ONE HUNDRED AND THIRTY FOUR
COSY ROOMS AND SUITES, FOUR FOOD AND
BEVERAGE EXPERIENCES AND A DECADENT
HEALTH CLUB AND SPA COMBINED INTO
THREE ELEMENTS OF LUXURIES - COMFORT,
THE WILD AND THE WIND





THERE IS SOMETHING BREATHTAKING
ABOUT WAKING UP TO THE SIGHT OF
ZEBRA, GIRAFFE, OSTRICH AND GAZELLE
GRAZING RIGHT OUTSIDE YOUR
WINDOW



A TWENTY FOUR HOUR BUSINESS CENTRE,
TECHNOLOGY SUPPORT AND AUDIO-VISUAL
EQUIPMENT, MAKE THE HOTEL PERFECT
FOR EVENTS AND CONFERENCES







OLE-SERENI OFFERS A DELECTABLE PALATE
OF LOCAL AND INTERNATIONAL FOOD
AND THE CHOICEST OF BEVERAGES AT ITS
VARIOUS RESTAURANTS.

FROM A BISTRO STYLE 'BIG FIVE' TO
SIGNATURE COCKTAILS AT THE WATERHOLE
AND PERCHED ON TOP, 'EAGLES' WHICH
EXCELS IN THE FINE DINING EXPERIENCE.
WE SPOIL YOU FOR CHOICE.



EAGLE'S LOUNGE BAR AND STEAK HOUSE,
OFFERING A SPECTACULAR VIEW OF THE
NATIONAL PARK.





PROFESSIONAL OUTDOOR CATERING
SERVICES TO YOUR OFFICE OR HOME OR
EVEN IN THE MIDST OF THE NATIONAL
PARK OFFERING LIVE COOKING AND
EXTENSIVE CUISINE OFFERING.
THE PERFECT CATERERS FOR ANY EVENT
FROM 5 TO 1500 PEOPLE.



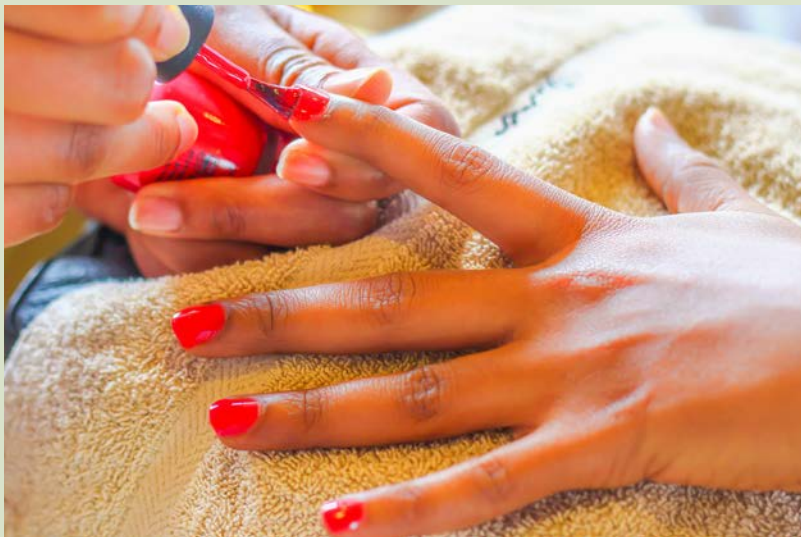


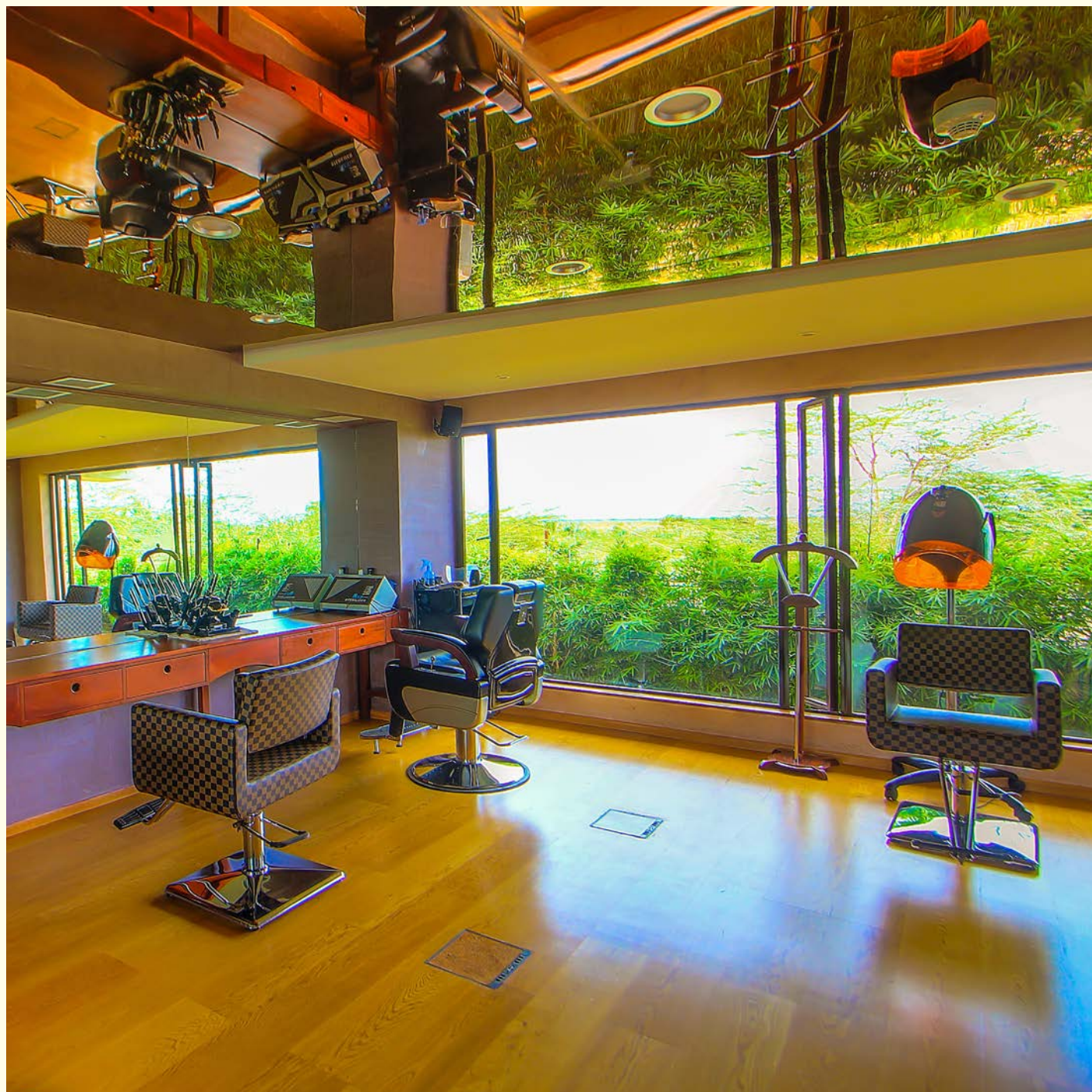
DRUM YOUR BODY INTO SHAPE AT OUR
FULLY EQUIPPED DUMA HEALTH CLUB OR
SIT BY THE NGONG POOL BAR WHILST
TRYING TO SPOT YOUR FAVORITE GAME AT
THE NATIONAL PARK. DUMA ALSO OFFERS,
STEAM, SAUNA AND MASSAGE.





DUMA SALON IS LOCATED ON THE FIRST FLOOR AT THE DUMA HEALTH CLUB. IT OFFERS MANICURES, PEDICURES, HAIR TRIMS, HAIR TREATMENTS AND MUCH MORE.





OLE-SERENI OFFERS ITS GUESTS EXCITING
TRIPS TO VARIOUS GAME RESERVES,
NATIONAL PARKS AND ANIMAL ORPHANAGES
LOCATED ACROSS THE COUNTRY.

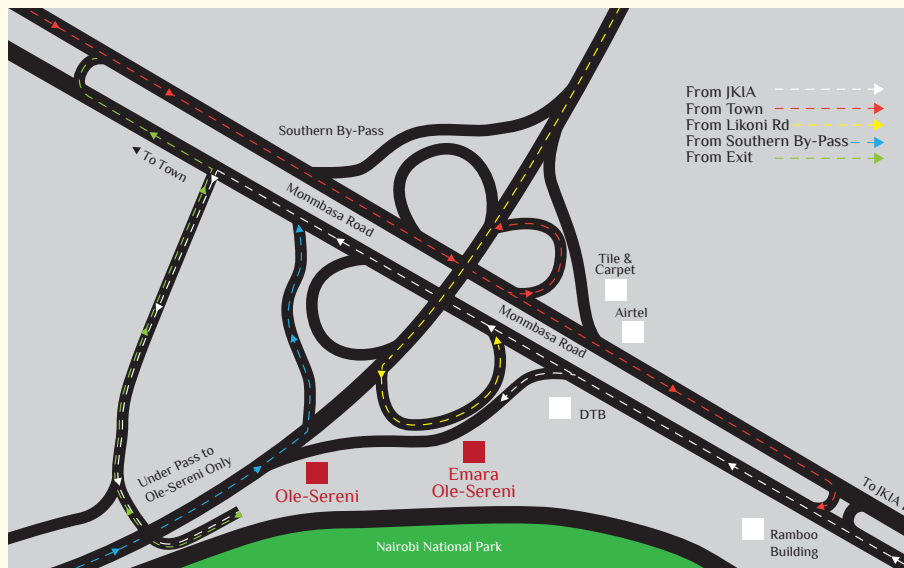
THE CONCIERGE IS EQUIPPED TO PLAN THE
WHOLE ITINERARY, SO THAT ALL THE GUESTS
HAVE TO DO IS SIT BACK, RELAX AND ENJOY
THE WONDERS THAT KENYA HAS TO OFFER.







LOCATED JUST OFF MOMBASA ROAD
OLE-SERENI IS THE ONLY HOTEL
BORDERING A NATIONAL GAME PARK.
EASY ACCESS FROM HOTEL ENTRY AND
EXIT TO THE EXPRESS WAY ENABLES ONE
TO GET TO CBD WITHIN A FEW MINUTES





Ole-Sereni Hotel, Mombasa Road | P.O. Box 18187-00500, Nairobi, Kenya
Tel: +254 20 3901000 | Mob: 0732 191000 | info@ole-serenihotel.com | www.ole-serenihotel.com